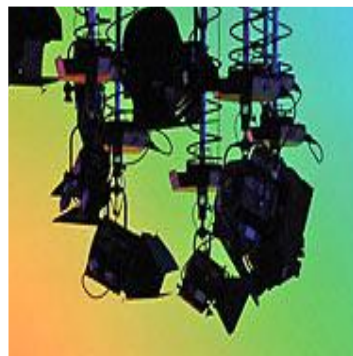


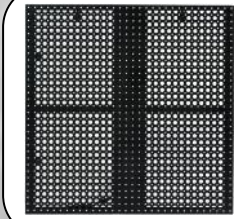
Audio & Lighting



2011

Trade Catalogue
Lighting Lab

CONTENTS



LED SCREENS

LED LIGHTING



FRESNELS/PC

PROFILES



MICROPHONES

LIGHTING CONTROL



SPEAKERS

AUDIO CONTROL



TRUSSING

STANDS



CABLES

FX MACHINES



10mm RGB LEDS



10mm LED RGB PAR64
Price \$ 179.00 inc GST
Prod Code : 2LEPA64
Lamp : 183 RGB 10mm LEDS
Control : DMX
Modes : Master-Slave/Auto/Audio
Weight : 3kg
Size : 265mm x 265mm x 230mm



10mm LED RGB BAR
Price \$ 279.00 inc GST
Prod Code : 2LEBARGB
Lamp : 252 RGB 10mm LEDS
Control : DMX
Modes : Master-Slave/Auto/Audio
Weight : 3kg
Size : 1010mm x 70mm x 65mm

10mm RGB LED PAR SYSTEM



10mm LED RGB PAR SYSTEM
Price \$ 599.00 inc GST
Prod Code : 2LEPASY1
Lamp : 4 x 108 RGB 10mm LEDS
Control : Footswitch & DMX
Modes : Master-Slave/Auto/Audio
Weight : 13.5kg
Size : 1250mm x 365mm x 150mm

3watt TRICOL LEDS

~ **EXCITING NEW LED PRODUCTS** ~
 Refresh Rate 400Hz - Suitable for TV / Studio
 3watt TRICOLOUR EDISON LEDS

3w TRICOL STUDIO PAR
Price \$ 599.00 inc GST
Prod Code : 2LESTPA
Lamp : 18 x 3watt Tri Colour LEDS
Control : DMX (3 to 8 ch DMX)
Modes : Master-Slave/Auto/Audio
Weight : 4kg
Size : 245mm x 270mm x 220mm



~ **SIMILAR OUTPUT TO 1000w FRESNEL** ~

3w TRICOL ROTATING LED BAR
Price \$ 1499.00 inc GST
Prod Code : 2LEBARO
Lamp : 36 x 3watt Tri Colour LEDS
Control : DMX (5 to 111 ch DMX)
Modes : Master-Slave/Auto/Audio
Weight : 9.5kg
Size : 1100mm x 83mm x 141mm
Rotation angle : 0 - 270 degrees



Features
ROTATING HEAD



LED MOVER

60w LED MOVER
Price \$ 895.00 inc GST
Prod Code : 2LEMO60
Lamp : 60watt LED
Control : DMX
Modes : Master/Slave - Auto - Audio
Weight : 8.5kg
Size : 340mm x 245mm x 405mm



~ **SIMILAR OUTPUT TO 250w ARC LAMP** ~

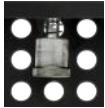
Optional Extras : Hook clamp, Safety wire

LED Screens



LED OUTDOOR 18.75P CURTAIN PORTABLE VERSION

Price \$ 1699.00 inc GST
 (\$4719.00 per sq. mtr)
Prod Code : 6O183232
Pixel Pitch : 18.75mm
Resolution : 32 dots x 32 dots
IP Rating : IP65
Weight : 9kg
Size : 600mm x 600mm x 95mm



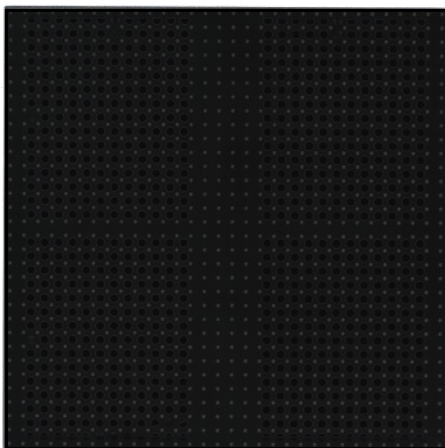
Portable Systems feature a Fast - Lock mechanism on panels for quick and easy assembly.
 ~ No tools required ~

OUTDOOR full colour LED Panels

Available in either
INSTALLATION or PORTABLE VERSIONS
 Pixel Pitch range available from 10mm - 32mm
 For enquiries please call

LED OUTDOOR 25P PANEL INSTALLATION VERSION

Price \$ 1599.00 inc GST
 (\$2494.00 per sq. mtr)
Prod Code : 6O253232
Pixel Pitch : 25mm
Resolution : 32 dots x 32 dots
IP Rating : IP65
Weight : 40kg
Size : 800mm x 800mm



VIDEO PROCESSOR

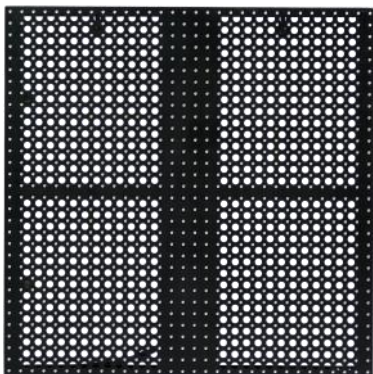


LEDSYNC 820C
Price \$ 2250.00 inc GST
Prod Code : 6PRLE820
Size : 420mm x 270mm x 58mm
Weight : 4kg



LED INDOOR 20P MESH PORTABLE VERSION

Price \$ 1399.00 inc GST
(\$3415.00 per sq. mtr)
Prod Code : 6I203232
Pixel Pitch : 20mm
Resolution : 32 dots x 32 dots
IP Rating : IP54
Weight : 8.5kg
Size : 640mm x 640mm x 90mm



~ No Fuss Connection ~
on portable systems

Panels have on board receiver cards which enables the data signal to be daisy-chained

Uses Powercon connector and Neutrik RJ45 etherCON connector



Portable Systems feature a Fast - Lock mechanism on panels for quick and easy assembly.
~ No tools required ~



INDOOR full colour LED Panels

Available in either
INSTALLATION or PORTABLE VERSIONS

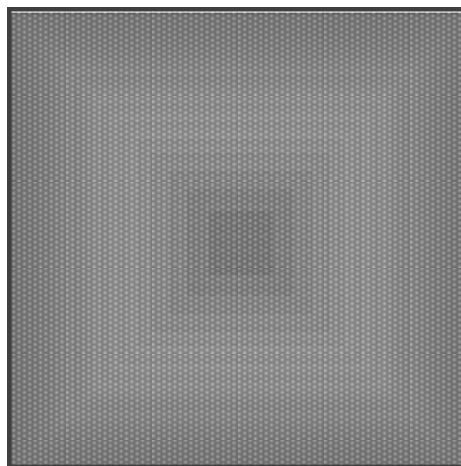
Pixel Pitch range available from 4mm - 40mm

For enquiries please call

~ HIGH RESOLUTION ~

LED INDOOR 10P PANEL INSTALLATION VERSION

Price \$ 2430.00 inc GST
(\$4500.00 per sq. mtr)
Prod Code : 6I107272
Pixel Pitch : 10mm
Resolution : 72 dots x 72 dots
IP Rating : IP54
Weight : 30kg
Size : 720mm x 720mm x 100mm



PROFILES



PROFILE 750w 5 Deg.
Price \$ 599.00 inc GST
Prod Code : 2PR7505
Lamp : 240v 750 watt HPL G9.5
Colour Temperature : 3200k
Weight : 8.8kg
Size : 1090mm x 415mm x 415mm
Beam angle : 5 degrees



PROFILE 750w 10 Deg.
Price \$ 549.00 inc GST
Prod Code : 2PR7510
Lamp : 240v 750 watt HPL G9.5
Colour Temperature : 3200k
Weight : 7kg
Size : 740mm x 380mm x 380mm
Beam angle : 10 degrees



PROFILE 750w - Fixed Beam as shown
Price \$ 399.00 inc GST
Prod Code : 2PR75 - 19/26/36/50
Lamp : 240v 750 watt HPL G9.5
Colour Temperature : 3200k
Weight : 7.3kg
Size : 610mm x 215mm x 295mm
Beam angles : 19/26/36/50 degrees

Optional Extras : Hook clamp, Safety wire

PROFILES



PROFILE 750w 90 Deg.
Price \$ 499.00 inc GST
Prod Code : 2PR7590
Lamp : 240v 750 watt HPL G9.5
Colour Temperature : 3200k
Weight : 7.5kg
Size : 550mm x 315mm x 450mm
Beam angle : 90 degrees



ZOOM PROFILE 750w 25 - 50 Deg.
Price \$ 499.00 inc GST
Prod Code : 2PR75255
Lamp : 240v 750 watt HPL G9.5
Colour Temperature : 3200k
Weight : 9.4kg
Size : 635mm x 210mm x 295mm
Beam angle : 25 - 50 degrees



ZOOM PROFILE 750w 15 - 30 Deg.
Price \$ 499.00 inc GST
Prod Code : 2PR75153
Lamp : 240v 750 watt HPL G9.5
Colour Temperature : 3200k
Weight : 10.2kg
Size : 800mm x 210mm x 295mm
Beam angle : 15 - 30 degrees

Optional Extras : Hook clamp, Safety wire

FOLLOWSPOTS

FOLLOWSPOT 1200w MSR
Price \$ 1875.00 inc GST
Prod Code : 2FO12
Lamp : 240v 1200w MSR G22
Colour Temperature : 5600k
Size : 1270 x 240 x 305mm
Weight : 15.5kg
Beam angle : 9 - 16 deg.



FOLLOWSPOT 1000w/2000w
Price \$ 985.00 inc GST
Prod Code : 2FO10
Lamp : 240v QI 1000w / 2000w G22
Colour Temperature : 3200k
Weight : 10kg
Size : 720mm x 240mm x 305mm
Beam angle : 10 - 18 degrees
 ~ Electronic dimmer included ~



**Optional Extras : Colour Changer
 Stand , Flight case**

FRESNELS



FRESNEL 500w/650w
Price \$ 189.00 inc GST
Prod Code : 2FR50
Lamp : 240v 500/650 watt T/25, T/26
Colour Temperature : 3200k
Weight : 3.2kg
Size : 275mm x 150mm x 188mm
Beam angle : 8 - 50 degrees



FRESNEL 1200w
Price \$ 285.00 inc GST
Prod Code : 2FR12
Lamp : 240v 1200 watt T/29
Colour Temperature : 3200k
Weight : 6.3kg
Size : 370mm x 245mm x 260mm
Beam angle : 13 - 50 degrees



FRESNEL 2000w
Price \$ 385.00 inc GST
Prod Code : 2FR20
Lamp : 240v 2000w G22
Colour Temperature : 3200k
Weight : 8.5kg
Size : 385mm x 245mm x 310mm
Beam angle : 7 - 40 degrees

Optional Extras : Barndoor, Hook clamp, Safety wire

PC's



PC 500w/650w
Price \$ 189.00 inc GST
Prod Code : 2PC50
Lamp : 240v 500/650 watt T/25, T/26
Colour Temperature : 3200k
Weight : 3.2kg
Size : 275mm x 150mm x 188mm
Beam angle : 8 - 50 degrees



PC 1200w
Price \$ 285.00 inc GST
Prod Code : 2PC12
Lamp : 240v 1200 watt T/29
Colour Temperature : 3200k
Weight : 6.3kg
Size : 370mm x 245mm x 260mm
Beam angle : 13 - 50 degrees



PC 2000w
Price \$ 385.00 inc GST
Prod Code : 2PC20
Lamp : 240v 2000w G22
Colour Temperature : 3200k
Weight : 8.5kg
Size : 385mm x 245mm x 310mm
Beam angle : 7 - 40 degrees

Optional Extras : Barndoor, Hook clamp, Safety wire

CYCLIGHTS



QUAD CYC 500w
Price \$ 620.00 inc GST
Prod Code : 2CYQU50
Lamp : 240v 500 watt R7S
Colour Temperature : 3200k
Weight : 11kg
Size : 960mm x 180mm x 190mm
Beam angle : Flood



QUAD CYC 1250w
Price \$ 796.00 inc GST
Prod Code : 2CYQU10
Lamp : 240v 1000 watt
Colour Temperature : 3200k
Weight : 20.8kg
Size : 1330mm x 205mm x 280mm
Beam angle : Flood

MOLEFEY DUET



MOLEFEY DUET 1300w
Price \$ 189.00 inc GST
Prod Code : 2MODU
Lamp : 2 x 120v 650w DWE PAR36
Colour Temperature : 3200k
Weight : 3.5kg
Size : 440mm x 155mm x 270mm
Beam angle : Flood

Optional Extras : Hook clamp, Safety wire



NEW PRODUCT

THE LONG AWAITED SOURCE4 FRESNEL FROM ETC
DUE FOR RELEASE JULY 2011

~ Please call for price ~

FRESNEL 575w
Prod Code : 2FR57S4
Lamp : 575 watt / 750 watt 240v HPL G9.5
Colour Temperature : 3200k
Weight : 6.1kg
Size : 315mm x 278mm x 230mm
Beam angle : 20 - 65 degrees



Optional Extras : Barndoor, Hook clamp, Safety wire



ETC SOURCE4 Jr Zoom Profile 575 watt

ZOOM PROFILE 575w 25 - 50 Deg.
Price \$ 535.00 inc GST
Prod Code : 2PR57S4J
Lamp : 240v 575 watt HPL G9.5
Colour Temperature : 3200k
Weight : 4.5kg
Size : 490mm x 246mm x 246mm
Beam angle : 25 - 50 degrees

Optional Extras : Hook clamp, Safety wire

ETC SOURCE4 Zoom Profiles - 750 watt



Optional Extras : Hook clamp, Safety wire

15 - 30 Degree Zoom

ZOOM PROFILE 750w 15 - 30 Deg.
Price \$ 975.00 inc GST
Prod Code : 2PR75S41
Lamp : 240v 750 watt HPL G9.5
Colour Temperature : 3200k
Weight : 9.5kg
Size : 752mm x 278mm x 278mm
Beam angle : 15 - 30 degrees

25 - 50 Degree Zoom

ZOOM PROFILE 750w 25 - 50 Deg.
Price \$ 975.00 inc GST
Prod Code : 2PR75S42
Lamp : 240v 750 watt HPL G9.5
Colour Temperature : 3200k
Weight : 7.6kg
Size : 607mm x 278mm x 278mm
Beam angle : 25 - 50 degrees



LIGHTING CONSOLES

LSC - MINUM 12/24
Price \$ 1295.00 inc GST
Prod Code : 2DEMI12
DMX Chn: 24
Weight : 6kg
Size : 90mm x 440mm x 352mm



LSC - CLARITY
PC BASED SOFTWARE
Available in various configurations
Call us for details



LSC - MAXIM M
Price \$ 2850.00 inc GST
Prod Code : 2DEMAM
DMX Chn: 512
Weight : 11kg
Size : 115mm x 716mm x 340mm



ETC ELEMENT
Available in four options
Call us for details

ETC - SMARTFADE ML
Price \$ 3950.00 inc GST
Prod Code : 2DEETSFML
DMX Chn: 2 X 512
Weight : 4.5kg
Size : 64mm x 686mm x 254mm



ETC - SMARTFADE 1248
Price \$ 1995.00 inc GST
Prod Code : 2DEETSF12
DMX Chn: 512
Weight : 3kg
Size : 64mm x 457mm x 254mm
Also available in 1296 & 2496



MANY MORE LSC, ETC & JANDS PRODUCTS AVAILABLE - FOR ENQUIRIES PLEASE CALL

DIMMERS

JANDS FPX
Price \$ 1995.00 inc GST
Prod Code : 2DIFPX
CHANNELS : 12
Weight : 18kg
Size : 483mm x 400mm x 132mm



JANDS 4PACKD
Price \$ 750.00 inc GST
Prod Code : 2DI4PD
CHANNELS : 4
Weight : 4.5kg
Size : 344mm x 265mm x 105mm



JANDS HPC
Price \$ 3950.00 inc GST
Prod Code : 2DIHPC
CHANNELS : 12
Weight : 28kg
Size : 478mm x 350mm x 133mm





Shure Microphones

PG SERIES

PG48 Vocal Mic	Prod Code : 1MIPG48 Price \$ 49.00 inc GST
PG52 Bass Mic	Prod Code : 1MIPG52 Price \$ 149.00 inc GST
PG56 Instrument Mic	Prod Code : 1MIPG56 Price \$ 99.00 inc GST
PG57 Instrument Mic	Prod Code : 1MIPG57 Price \$ 69.00 inc GST
PG58 Vocal Mic	Prod Code : 1MIPG58 Price \$ 79.00 inc GST
PG81 Studio Condenser Mic	Prod Code : 1MIPG81 Price \$ 159.00 inc GST
PGDrum Mic Set -1x52/3xS56	Prod Code : 1MIPGDR Price \$ 349.00 inc GST

SM SERIES

SM48 Vocal Mic	Prod Code : 1MISM48 Price \$ 89.00 inc GST
SM57 Instrument Mic	Prod Code : 1MISM57 Price \$ 159.00 inc GST
SM58 Vocal Mic	Prod Code : 1MISM58 Price \$ 159.00 inc GST
SM81 Studio Condenser Mic	Prod Code : 1MISM81 Price \$ 649.00 inc GST

BETA SERIES

BETA52A Bass Mic	Prod Code : 1MIBE52 Price \$ 299.00 inc GST
BETA57A Instrument Mic	Prod Code : 1MIBE57 Price \$ 199.00 inc GST
BETA58A Vocal Mic	Prod Code : 1MIBE52 Price \$ 249.00 inc GST

Complete range of Shure Microphones available
please call for pricing on items not listed here



Shure Wireless Systems

PG WIRELESS SERIES

PG Handheld Mic - PG2/PG58 Mic with PG4 Receiver	Prod Code : 1WSPG58 Price \$ 449.00 inc GST
PG Guitar Pack - PG1/WA302 Pack with PG4 Receiver	Prod Code : 1WSPGGU Price \$ 449.00 inc GST
PG Lapel Mic - PG1/PG185 Lapel with PG4 Receiver	Prod Code : 1WSPGLA Price \$ 549.00 inc GST
PG Headset Mic - PG1/PG30 Headset with PG4 Receiver	Prod Code : 1WSPGHE Price \$ 549.00 inc GST



SLX WIRELESS SERIES

SLX Handheld Mic - SLX2/SM58 Mic with SLX4 Receiver	Prod Code : 1WSSL58 Price \$ 949.00 inc GST
SLX Handheld Mic - SLX2/BETA58 Mic with SLX4 Receiver	Prod Code : 1WSSL58B Price \$ 1029.00 inc GST
SLX Guitar Pack - SLX1/WA302 Pack with SLX4 Receiver	Prod Code : 1WSSLGU Price \$ 859.00 inc GST
SLX Lapel Mic - SLX1/WL185 Lapel with SLX4 Receiver	Prod Code : 1WSSLA Price \$ 1199.00 inc GST
SLX Min Lapel Mic - SLX1/WL93 Lapel with SLX4 Receiver	Prod Code : 1WSSLAM Price \$ 979.00 inc GST
SLX Headset Mic - SLX1/WH30 with SLX4 Receiver	Prod Code : 1WSSLHE Price \$ 1029.00 inc GST



Complete range of Shure Wireless Microphones available
please call for pricing on items not listed here

PROCESSORS



LEXICON MX200 FX UNIT
Price \$ 305.00 inc GST
Prod Code : 1PRMX200

Dual-Processor design
 99 Factory/99 User Programs
 USB "Hardware Plug-In" Feature
 S/PDIF Digital Input/Output
 24 bit, 48kHz Sample Rate



DBX 231 Graphic Equaliser
Price \$ 349.00 inc GST
Prod Code : 1EQDB231

2 CH 31 Band Graphic EQ
 Switchable Boost/cut
 Ranges of ± 6 or ± 12 dB
 XLR & TRS Inputs & Outputs



DBX-1066 Compressor/Limiter
Price \$ 995.00 inc GST
Prod Code : 1PR1066

Compressor/Limiter & Expander/Gate
 2 ch with PeakStopPlus™
 Switchable OverEasy® or Hard Knee
 Input/Output Meter & Gain Reduction Meters
 Balanced XLR Inputs & Outputs



DBX-1074 Quad Noise Gate
Price \$ 849.00 inc GST
Prod Code : 1PR1074

Quad Noise Gate
 4 Independent Gate chs
 Differentially Balanced XLR 6.5mm (1/4") In/Output
 Independent Key Filtering
 Independent Threshold/Release Controls
 RMS Level Detection
 Stereo

MANY MORE PRODUCTS AVAILABLE - FOR ENQUIRIES PLEASE CALL



SOUNDCRAFT NOTEPAD102 MIXER
Price \$ 199.00 inc GST
Prod Code : 1MINO102

Key Features
 2 Mono inputs
 2 Stereo inputs
 1 Aux send



SOUNDCRAFT EFX8 MIXER
Price \$ 599.00 inc GST
Prod Code : 1MIEFX8

Key Features
 8 Mono inputs
 2 Stereo inputs
 2 Aux busses
 Dual Lexicon FX



SOUNDCRAFT FX16ii MIXER
Price \$ 1599.00 inc GST
Prod Code : 1MIFX16

Key Features
 16 Mono inputs
 4 Stereo returns
 4 Bus architecture
 Dual Lexicon FX



Available in three Models
 16ch / 24ch / 32ch

SOUNDCRAFT SPIRIT LX7MkII 24ch
Price \$ 2999.00 inc GST
Prod Code : 1MILX7

Key Features
 24 Mono inputs
 4 Stereo inputs
 4 Sub Groups
 6 Aux
 4 Band EQ

SOUNDCRAFT Si Compact DIGITAL MIXERS - Price \$ P.O.A.



Available in three Models
 32 - 16 / 48 - 24 / 64 - 32

Key Features
 4 Stereo inputs
 24 Group/Aux/FX output busses
 8 Matrix outputs
 L/C/R outputs
 Monitor & Headphone Outputs
 FaderGlow
 Rotary encoders
 OLED Screens

POWERED SPEAKERS



OTTO - P210A 10"/250w
 Price \$ 349.00 inc GST
 Prod Code: 1SAOP210
 Type: 2-way 10" Active Speaker
 Rated Power: 250w
 Freq. Response : 55Hz-18KHz
 Max SPL: 118dB
 LF : 10"LF/38mm voice coil
 HF: Ti Diaphragm/34mm
 Size: 345 x 530 x 310(mm)
 Weight: 24kg



OTTO - P212A 12"/300w
 Price \$ 399.00 inc GST
 Prod Code: 1SAOP212
 Type: 2-way 12" Active Speaker
 Rated Power: 300w
 Freq. Response : 50Hz-18KHz
 Max SPL: 122dB
 LF : 12"LF/63mm voice coil
 HF: Ti Diaphragm/34mm
 Size: 410 x 630 x 330(mm)
 Weight: 27kg



OTTO - P215A 15"/400w
 Price \$ 449.00 inc GST
 Prod Code: 1SAOP215
 Type: 2-way 15" Active Speaker
 Rated Power: 400w
 Freq. Response : 45Hz-20KHz
 Max SPL: 124dB
 LF : 15"LF/63mm voice coil
 HF: Ti Diaphragm/34mm
 Size: 496 x 720 x 365(mm)
 Weight: 31kg



OTTO - P15SA 15"/600w
 Price \$ 449.00 inc GST
 Prod Code: 1SAOP15S
 Type: Subwoofer, 15" Bass Reflex
 Rated Power: 600w
 Freq. Response : 39Hz-125Hz
 Max SPL: 128dB
 LF : 15"LF/75mm voice coil
 HF: None
 Size: 480 x 640 x 500(mm)
 Weight: 30kg

POWERED SPEAKERS



OTTO - F15A 15"/500w
 Price \$ 995.00 inc GST
 Prod Code: 1SAOF115
 Type: 2-way 15" Active Speaker
 Rated Power: 500w
 Freq. Response : 40Hz-20KHz
 Max SPL: 128dB
 LF : 15"LF/75mm voice coil
 HF: Ti Diaphragm/75mm
 Size: 424 x 740 x 437(mm)
 Weight: 27kg



OTTO - F212A DUAL 12"/800w
 Price \$ 1250.00 inc GST
 Prod Code: 1SAOF212
 Type: 2-way 2x12" Active Speaker
 Rated Power: 800w
 Freq. Response : 45Hz-20KHz
 Max SPL: 131dB
 LF : 2x12"LF/75mm voice coil
 HF: Ti Diaphragm/75mm
 Size: 424 x 740 x 437(mm)
 Weight: 36kg



OTTO - F215A DUAL 15"/850w
 Price \$ 1395.00 inc GST
 Prod Code: 1SAOF215
 Type: 2-way 2x15" Active Speaker
 Rated Power: 850w
 Freq. Response : 40Hz-20KHz
 Max SPL: 132dB
 LF : 2x15"LF/75mm voice coil
 HF: Ti Diaphragm/75mm
 Size: 450 x 1153 x 508(mm)
 Weight: 52kg



OTTO - F18SA SUB 18"/600w
 Price \$ 1195.00 inc GST
 Prod Code: 1SAOF18S
 Type: 18" Subwoofer
 Rated Power: 600w
 Freq. Response : 35Hz-100Hz
 Max SPL: 128dB
 LF : 18"LF/100mm voice coil
 HF: None
 Size: 568 x 627 x 710(mm)
 Weight: 58.5kg

PASSIVE SPEAKERS



OTTO LINE ARRAY 10"/850w
 Price \$ 1695.00 inc GST
 Prod Code: 1SPOL210
 Type: 2-way 10" Passive Line Array
 Rated Power: 850w
 Freq. Response : 60Hz-20KHz
 Max SPL: 138dB
 LF : 2x10"LF/75mm voice coil
 HF: 1x75mm Diaphragm/1.4"exit
 Size: 850 x 300 x 415(mm)
 Weight: 35kg



OTTO TWIN SUB 18"/1600w
 Price \$ 1650.00 inc GST
 Prod Code: 1SPOL28S
 Type: Dual 18" Horn Bass Reflex Sub.
 Rated Power: 1600w
 Freq. Response : 40Hz-150Hz
 Max SPL: 139dB
 LF : 2x18"LF
 HF: None
 Size: 700 x 1006 x 720(mm)
 Weight: 111kg

AMP & PROCESSOR



DP4000 POWER AMP
 Price \$ 2350.00 inc GST
 Prod Code: OTTO - DP4000
 Type: Switch Mode Power Amp
 Power @ 8 ohms: 2 x 1300w
 Power @ 4 ohms: 2 x 1650w
 Size: 432 x 455 x 90(mm)
 Weight: 13kg



DSC48 PROCESSOR
 Price \$ 1395.00 inc GST
 Prod Code: OTTO - DSC48
 Type: Speaker Processor
 Size: 480 x 285 x 45(mm)
 Weight: 3.5kg

EON - POWERED SPEAKERS



POWERED SPEAKER 10"/280w
Price \$ 1049.00 inc GST
Prod Code: EON - 510
Type: 2-way 10" Active Speaker
Rated Power: 280w
Freq. Response : 70Hz-17KHz
Max SPL: 121dB
LF : 10"LF/1.5" voice coil
HF: Diaphragm/25.4mm
Size: 490 x 313 x 262(mm)
Weight: 7.7kg



POWERED SPEAKER 15"/280w
Price \$ 899.00 inc GST
Prod Code: EON - 315
Type: 2-way 15" Active Speaker
Rated Power: 280w
Freq. Response : 50Hz-18KHz
Max SPL: 127dB
LF : 15"LF Speaker
HF: Diaphragm/25.4mm
Size: 685 x 438 x 366(mm)
Weight: 15.9kg



POWERED SPEAKER 15"/625w
Price \$ 1249.00 inc GST
Prod Code: EON - 515XT
Type: 2-way 15" Active Speaker
Rated Power: 625w
Freq. Response : 42Hz-18KHz
Max SPL: 132dB
LF : 15"LF/2" voice coil
HF: Diaphragm/37.5mm
Size: 673 x 406 x 368(mm)
Weight: 14.8kg



POWERED SUB 18"/500w
Price \$ 1699.00 inc GST
Prod Code: EON - 518S
Type: Subwoofer, 18" Bass Reflex
Rated Power: 500w
Freq. Response : 36Hz-130Hz
Max SPL: 129dB
LF : 18"LF/integrated voice coil
HF: None
Size: 617 x 569 x 652(mm)
Weight: 29.5kg



PRX 600 SERIES POWERED SPEAKERS



POWERED SPEAKER 12"/1000w
Price \$ 1299.00 inc GST
Prod Code: PRX - 612M
Type: 2-way 12" Active Speaker
Rated Power: 1000w
Freq. Response : 60Hz-17.5KHz
Max SPL: 134dB
LF : 12"LF/dual voice coil
HF: Diaphragm/37.5mm
Size: 592 x 353 x 340(mm)
Weight: 15.6kg



POWERED SPEAKER 15"/1000w
Price \$ 1499.00 inc GST
Prod Code: PRX - 615M
Type: 2-way 15" Active Speaker
Rated Power: 1000w
Freq. Response : 54Hz-18KHz F/R
Max SPL: 135dB
LF : 15"LF/dual voice coil
HF: Diaphragm/37.5mm
Size: 660 x 429 x 414(mm)
Weight: 19.7kg



POWERED SPEAKER DUAL 15"/1500w
Price \$ 1999.00 inc GST
Prod Code: PRX - 625
Type: 2-way 2x15" Active Speaker
Rated Power: 1500w
Freq. Response : 55Hz-17.5KHz Flat
Max SPL: 139dB
LF : 2x15"LF/dual voice coil
HF: Diaphragm/37.5mm
Size: 1053 x 430 x 413(mm)
Weight: 27.2kg



POWERED SUB 18"/1000w
Price \$ 2399.00 inc GST
Prod Code: PRX - 618S/XLF
Type: 18" Subwoofer
Rated Power: 1000w
Freq. Response : 39Hz-93Hz
Max SPL: 133dB
LF : 18"LF/dual voice coil
HF: None
Size: 685 x 530 x 716(mm)
Weight: 37kg

VRX LINE ARRAY PASSIVE SPEAKERS



VRX LINE ARRAY 12"/800w
Price \$ 4495.00 inc GST
Prod Code: VRX - 932LA
Type: 2-way 12" Passive Line Array
Rated Power: 800w
Freq. Response : 72Hz-20KHz
Max SPL: 130dB
LF : 12"LF/dual voice coil
HF: 3x38mm Diaphragm
Size: 349 x 597 x 381 (mm)
Weight: 21kg



VRX SUB 18"/800w
Price \$ 2895.00 inc GST
Prod Code: VRX - 918S
Type: 18" Bass Reflex Subwoofer
Rated Power: 800w
Freq. Response : 34Hz-220Hz
Max SPL: 130dB
LF : 18"LF/differential drive woofer
HF: None
Size: 508 x 597 x 749(mm)
Weight: 37kg

CROWN AMPS with built in processor



CROWN ITECH HD5000 AMP
Price \$ 7995.00 inc GST
Prod Code:
Power @ 8 ohms: 1250w per ch
Power @ 4 ohms: 2500w per ch
Size: 89 x 483 x 411 (mm)
Weight: 12.7kg



CROWN XTi4000 AMP
Price \$ 2399.00 inc GST
Prod Code:
Power @ 8 ohms: 650w per ch
Power @ 4 ohms: 1200w per ch
Size: 89 x 483 x 356(mm)
Weight: 8.4kg

Stands

WINCH UP STAND



STANDARD WINCH UP STAND
 Price : \$ 299.00 inc GST
 Prod Code : 4STWST
 Load Cap : up to 85kg
 Height : Up to 4mtr



PUSH UP STANDS

ECONOMY PUSH UP STAND
 Price \$ 59.00 inc GST
 Prod Code : 4STPUEC
 Load Cap : up to 30kg
 Height : Up to 3mtr

STANDARD PUSH UP STAND
 Price \$ 79.00 inc GST
 Prod Code : 4STPUST
 Load Cap : up to 50kg
 Height : Up to 3mtr

Optional Extras : TRUSS ADAPTORS / T-BARS / SPIGOTS

FOLLOWSPOT STAND



FOLLOWSPOT STAND
 Price \$ 299.00 inc GST
 Prod Code : 4STFO
 Load Cap : up to 50kg
 Height : Up to 1.2mtr

H STAND
 Price \$ 9.00 inc GST
 Prod Code : 4STFLH



STD HOOK CLAMP
 Price \$ 6.00 inc GST
 Prod Code : 4HCST



SAFETY WIRE
 Price \$ 9.00 inc GST
 Prod Code : 4SAWI



MIC STANDS

SHORT BOOM STAND
 Price \$ 37.00 inc GST
 Prod Code : 1STMISH
 Height : Up to 0.8mtr

TALL BOOM STAND
 Price \$ 39.00 inc GST
 Prod Code : 1STMITA
 Height : Up to 1.7mtr



SPEAKER STANDS



SPEAKER POLE
 Price \$ 12.50 inc GST
 Prod Code : 1STSPPO
 Load Cap : up to 50kg
 Height : Up to 1.3mtr

PUSH UP SPEAKER STAND
 Price \$ 59.00 inc GST
 Prod Code : 1STSPPU
 Load Cap : up to 60kg
 Height : Up to 2.2mtr

WINCH UP SPEAKER STAND
 Price \$ 179.00 inc GST
 Prod Code : 1STSPWI
 Load Cap : up to 80kg
 Height : Up to 1.4mtr



390mm Tri Truss - 3mm wall

Available Lengths :

0.5mtr/ 1mtr / 2mtr / 3mtr

Size : 390mm x 390mm x 390mm

Wall thickness : 3mm

0.5mtr Truss - **Prod Code : 4TR05393 Price \$ 299.00 inc GST**

1mtr Truss - **Prod Code : 4TR10393 Price \$ 329.00 inc GST**

2mtr Truss - **Prod Code : 4TR20393 Price \$ 519.00 inc GST**

3mtr Truss - **Prod Code : 4TR30393 Price \$ 699.00 inc GST**



290mm Tri Truss - 3mm wall

Available Lengths :

0.5mtr/ 1mtr / 2mtr / 3mtr

Size : 290mm x 290mm x 290mm

Wall thickness : 3mm

0.5mtr Truss - **Prod Code : 4TR05293 Price \$ 159.00 inc GST**

1mtr Truss - **Prod Code : 4TR10293 Price \$ 229.00 inc GST**

2mtr Truss - **Prod Code : 4TR20293 Price \$ 339.00 inc GST**

3mtr Truss - **Prod Code : 4TR30293 Price \$ 449.00 inc GST**

290mm Tri Truss - 2mm wall

Available Lengths :

0.5mtr/ 1mtr / 2mtr / 3mtr

Size : 290mm x 290mm x 290mm

Wall thickness : 2mm

0.5mtr Truss - **Prod Code : 4TR05292 Price \$ 139.00 inc GST**

1mtr Truss - **Prod Code : 4TR10292 Price \$ 199.00 inc GST**

2mtr Truss - **Prod Code : 4TR20292 Price \$ 299.00 inc GST**

3mtr Truss - **Prod Code : 4TR30292 Price \$ 399.00 inc GST**

~ CURVED TRUSS ALSO AVAILABLE - P.O.A. ~

TRUSS END PLATE

Price \$ 89.00 inc GST

Prod Code : 4TRBAPL

Size : 350mm x 350mm

Thickness : 8mm



BASE PLATES



TRUSS BBQ PLATE

Price \$ 445.00 inc GST

Prod Code : 4TRBABBQ

Size : 1mtr Diameter

Thickness : 6mm

TRUSS CORNER

90degree VERTICAL TRUSS CORNER

Price \$ 249.00 inc GST

Prod Code : 4TRCOVE

Size : 290mm x 290mm x 290mm

Wall thickness : 3mm



~ OTHER ANGLES AVAILABLE ~

SPEAKER TOWER

BOX TRUSS SPEAKER TOWER

Price \$ 4499.00 inc GST

Prod Code : 4TRSPTO

Height : 5.8mtr

Max Load Capacity : 600kg

Size : 390mm x 390mm x 390mm x 390mm

Wall thickness : 3mm



TRUSS FURNITURE

TRUSS TABLE

Price \$ 310.00 inc GST

Prod Code : 4TRTA

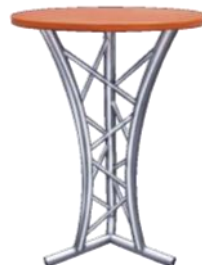
Size : 1100mm x 700mm

TRUSS STOOL

Price \$ 175.00 inc GST

Prod Code : 4TRST

Size : 830mm x 300mm



DREAM FX

SMOKE MACHINES



DREAMFX S400 SMALL FOGGER
Price \$ 69.00 inc GST
Prod Code : Dream S400
Power : 400 watt heat exchange
Output : 800 cu ft/min
Warm up time : 4.5 min
Remote : Wired
Size : 275mm x 150mm x 188mm
Weight : 3.5kg



DREAMFX S900 MEDIUM FOGGER
Price \$ 119.00 inc GST
Prod Code : Dream S900
Power : 800 watt heat exchange
Output : 10000 cu ft/min
Warm up time : 4.5 min
Remote : Wired & wireless
Size : 340mm x 210mm x 168mm
Weight : 8.2kg



DREAMFX S3000 LARGE FOGGER
Price \$ 699.00 inc GST
Prod Code : Dream S3000
Power : 3000 watt heat exchange
Output : 40000 cu ft/min
Warm up time : 10 min
Remote : Digital with Timer & DMX
Size : 690mm x 310mm x 250mm
Weight : 23kg

LOW FOG MACHINE



DREAMFX LF1500 LOW FOG
Price \$ 499.00 inc GST
Prod Code : Dream LF1500
Power : 1500 watt heat exchange
Output : 18000 - 40000 cu ft/min
Warm up time : 10 min
Remote : Wired & DMX
Size : 750mm x 410mm x 375mm
Weight : 23kg

BUBBLE MACHINES



DREAMFX B10 BUBBLE MACHINE
Price \$ 99.00 inc GST
Prod Code : Dream B10
Power : 25 watt Motor
Output : 50 sq mtr coverage
Consumption : 2 hour per litre
Remote : Wired with timer
Size : 360mm x 195mm x 230mm
Weight : 4.2kg



DREAMFX B30 BUBBLE MACHINE
Price \$ 189.00 inc GST
Prod Code : Dream B30
Power : 200 watt Motor
Output : 100 sq mtr coverage
Consumption : 20 min. per litre
Remote : Wired with timer
Size : 380mm x 390mm x 230mm
Weight : 11kg

HAZE MACHINES



DREAMFX H700 MEDIUM HAZER
Price \$ 299.00 inc GST
Prod Code : Dream H700
Power : 700 watt heat exchange
Output : 30000 cu ft/min
Warm up time : 1 min
Remote : Digital with Timer & DMX
Size : 375mm x 227mm x 325mm
Weight : 10kg



DREAMFX H1000 LARGE HAZER
Price \$ 499.00 inc GST
Prod Code : Dream H1000
Power : 1000 watt heat exchange
Output : 35000 cu ft/min
Warm up time : 12 min
Remote : Digital with Timer & DMX
Size : 630mm x 280mm x 290mm
Weight : 21kg



Dream FX has a full range of high quality Fog, Haze, Bubble and Snow liquids available for our complete Dream FX range of effects machines.

Speaker Cable



Available Lengths :

1mtr / 3mtr / 10mtr / 20mtr

- 1mtr 4 Core Speaker Cable - **Prod Code : 3SP4C01 Price \$ 12.00 inc GST**
- 3mtr 4 Core Speaker Cable - **Prod Code : 3SP4C03 Price \$ 19.00 inc GST**
- 10mtr 4 Core Speaker Cable - **Prod Code : 3SP4C10 Price \$ 44.00 inc GST**
- 20mtr 4 Core Speaker Cable - **Prod Code : 3SP4C20 Price \$ 78.00 inc GST**

All cables are 4 Core with Speakon Connectors

3Pin XLR Looms



Available Length : 6mtr

- 6mtr XLR 4 way LOOM - **Prod Code : 3XL3P406 Price \$ 32.00 inc GST**
- 6mtr XLR 8 way LOOM - **Prod Code : 3XL3P806 Price \$ 60.00 inc GST**

Multicores



16 send 4 return 30mtr Multicores -
Prod Code : 3MU16430 Price \$ 475.00 inc GST

24 send 4 return 30mtr Multicores -
Prod Code : 3MU24430 Price \$ 650.00 inc GST

16 send 4 return 50mtr Multicores -
Prod Code : 3MU16450 Price \$ 699.00 inc GST

24 send 4 return 50mtr Multicores -
Prod Code : 3MU24450 Price \$ 899.00 inc GST

3Pin Single MIC Cables

Available Lengths :

1mtr / 3mtr / 5mtr / 10mtr / 20mtr / 30mtr / 50mtr

- 1mtr XLR - **Prod Code : 3XLX101 Price \$ 9.00 inc GST**
- 3mtr XLR - **Prod Code : 3XLX103 Price \$ 11.00 inc GST**
- 5mtr XLR - **Prod Code : 3XLX105 Price \$ 13.00 inc GST**
- 10mtr XLR - **Prod Code : 3XLX110 Price \$ 18.00 inc GST**
- 20mtr XLR - **Prod Code : 3XLX120 Price \$ 28.00 inc GST**
- 30mtr XLR - **Prod Code : 3XLX130 Price \$ 38.00 inc GST**
- 50mtr XLR - **Prod Code : 3XLX150 Price \$ 58.00 inc GST**

Adaptors



5pin Male - 3pin Female Adaptor
5pin Female - 3pin Male Adaptor

Prod Code : 3AD5M3F Price \$ 7.50 inc GST
Prod Code : 3AD5F3M Price \$ 7.50 inc GST

3pin Male - 1/4" TS Adaptor
3pin Female - 1/4" TS Adaptor

Prod Code : 3AD3MTS Price \$ 7.50 inc GST
Prod Code : 3AD3FTS Price \$ 7.50 inc GST

3pin Male - 1/4" TRS Adaptor
3pin Female - 1/4" TRS Adaptor

Prod Code : 3AD3MTRS Price \$ 7.50 inc GST
Prod Code : 3AD3FTRS Price \$ 7.50 inc GST

TRS - 2 x TS Insert Lead 6mtr
RCA Male - RCA Male 2 way Loom 4.5mtr

Prod Code : 3ADTRSTS Price \$ 8.95 inc GST
Prod Code : 3AD5F3M Price \$ 8.95 inc GST

3Pin Single DMX Cables



Available Lengths :

1mtr / 3mtr / 5mtr / 10mtr / 20mtr / 30mtr / 50mtr

- 1mtr XLR - **Prod Code : 3DM3P101 Price \$ 12.00 inc GST**
- 3mtr XLR - **Prod Code : 3DM3P103 Price \$ 15.00 inc GST**
- 5mtr XLR - **Prod Code : 3DM3P105 Price \$ 17.00 inc GST**
- 10mtr XLR - **Prod Code : 3DM3P110 Price \$ 23.00 inc GST**
- 20mtr XLR - **Prod Code : 3DM3P120 Price \$ 36.00 inc GST**
- 30mtr XLR - **Prod Code : 3DM3P130 Price \$ 50.00 inc GST**
- 50mtr XLR - **Prod Code : 3DM3P150 Price \$ 75.00 inc GST**

5Pin Single DMX Cables



Available Lengths :

1mtr / 3mtr / 5mtr / 10mtr / 20mtr / 30mtr / 50mtr

- 1mtr XLR - **Prod Code : 3DM5P101 Price \$ 14.00 inc GST**
- 3mtr XLR - **Prod Code : 3DM5P103 Price \$ 17.00 inc GST**
- 5mtr XLR - **Prod Code : 3DM5P105 Price \$ 19.00 inc GST**
- 10mtr XLR - **Prod Code : 3DM5P110 Price \$ 25.00 inc GST**
- 20mtr XLR - **Prod Code : 3DM5P120 Price \$ 38.00 inc GST**
- 30mtr XLR - **Prod Code : 3DM5P130 Price \$ 52.00 inc GST**
- 50mtr XLR - **Prod Code : 3DM5P150 Price \$ 77.00 inc GST**

LIGHTING LAB

Factory 9 / 10 Clarice Road
Box Hill South 3128 Victoria Australia

PH 03 9898 7064 Email : sales@lightinglab.com.au FAX 03 9899 5774

www.lightinglab.com.au